

6D Laskin-Nozzle Aerosol Generator



The 6D is a small, light, and rugged portable, self-contained Laskin-Nozzle aerosol generator with integrated compressor. It is ideal for testing a wide variety of filter systems with airflows up to 2,000 cfm by generating a poly-dispersed, sub-micron aerosol. Applications include workstations, negative- pressure filtration units, biological safety cabinets, ceiling modules and more. It can also be used for testing positive pressure systems using an optional Positive Injection Pump and hose adapter.



Applications

- Independent Filter Certifiers
- Nuclear Facilities
- Pharmaceutical Manufacturers
- Medical Facilities & Cleanrooms
- Bio-Safety Cabinets & Fume Hoods*

* per NSF/ANSI 49

Key Features and Benefits

- Integrated compressor, no external air required
- Flex-fuel capable, allows for the use of a variety of reagents
- Integrated pressure gauge guarantees the correct pressure across the nozzle
- Air flow rates from 200 to 2,000 cfm to test a wide variety of filter systems



6D LASKIN-NOZZLE AEROSOL GENERATOR

A tough, portable solution

The 6D is a small, light, and rugged portable, self-contained Laskin-Nozzle aerosol generator. It is ideal for testing a wide variety of filter systems with airflows up to 2,000 cfm by generating a poly-dispersed, sub-micron aerosol. Applications include workstations, negative-pressure filtration units, biological safety cabinets, ceiling modules, and more.

The 6D can also be used for testing positive pressure systems using an optional hose adaptor. On-site routine maintenance is easy. And its integrated compressor makes implementation simple - all you need is a power source.



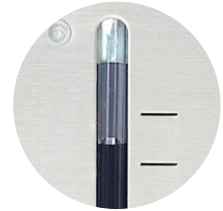
Hose Adaptor Connectors

PRODUCT SPECIFICATIONS

Dimension (L x W x H)	37.4 cm x 25.7 cm x 27.6 cm (14.8" x 10.1" x 10.9")
Weight	15kg (34lb.)
Aerosol Output Range	50 - 2,000 cfm
Aerosol Concentration	100 µg/l @ 200 cfm / 10 µg/l @ 2,000 cfm
Generator Type	2 or 6 Laskin Nozzle Jets (1/2 or 1-1/2 Nozzles)
Aerosol Type	Poly-dispersed (Cold)
Electrical	120VAC/60 Hz or 240VAC/50Hz
Compressed Air	Not Required, On-board integrated compressor

Performance Guaranteed

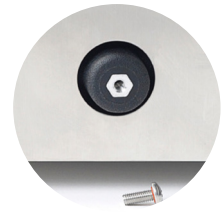
6D aerosol output is regulated with an included calibrated pressure gauge; guaranteeing 20psi across the nozzle per industry standards. The 6D complies with all applicable electrical and safety requirements and is CE approved.



Site Glass



Power Cord Storage



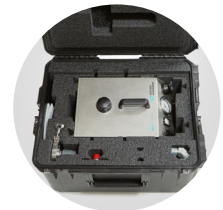
Drain Port

Easy to use

Integrated liquid fill sight glass, drain port, and power cord storage make operating, transporting, and storing the 6D simple and easy. A hose adaptor kit, used to introduce aerosol remotely, connects easily to the standard outlet using the sanitary flange or simple NPT connection.

Optional Heavy Duty Case

Heavy duty, water-proof transport case with wheels. Accommodates either a 4B, 4B-Lite or 6D generator, with space for optional hose adapter with cap to prevent spills. (Universal case with 6D generator shown).



Service & Training @ ATI

- OEM calibration, maintenance & repair
- ATI Certified Operational, Service & Maintenance Training (ask for details)
- Quality testing for HEPA filters & protective masks available at our ISO-9001 registered, NQA-1 & DOE audited Test Laboratory



Protecting People, Products & Critical Infrastructure

US HEADQUARTERS
+1.410.363.9696

EMEA OFFICE
+44 (0) 1462 676446

info@atitest.com
www.atitest.com



ISO 9001:2008