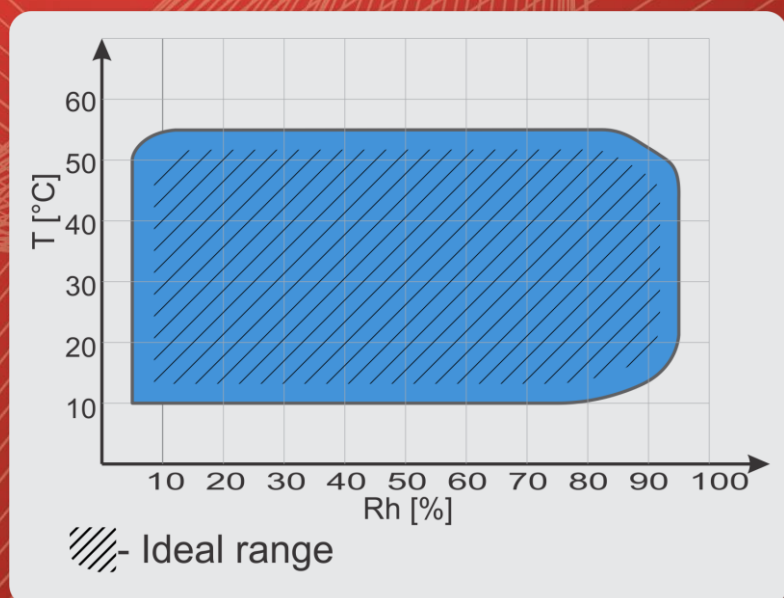


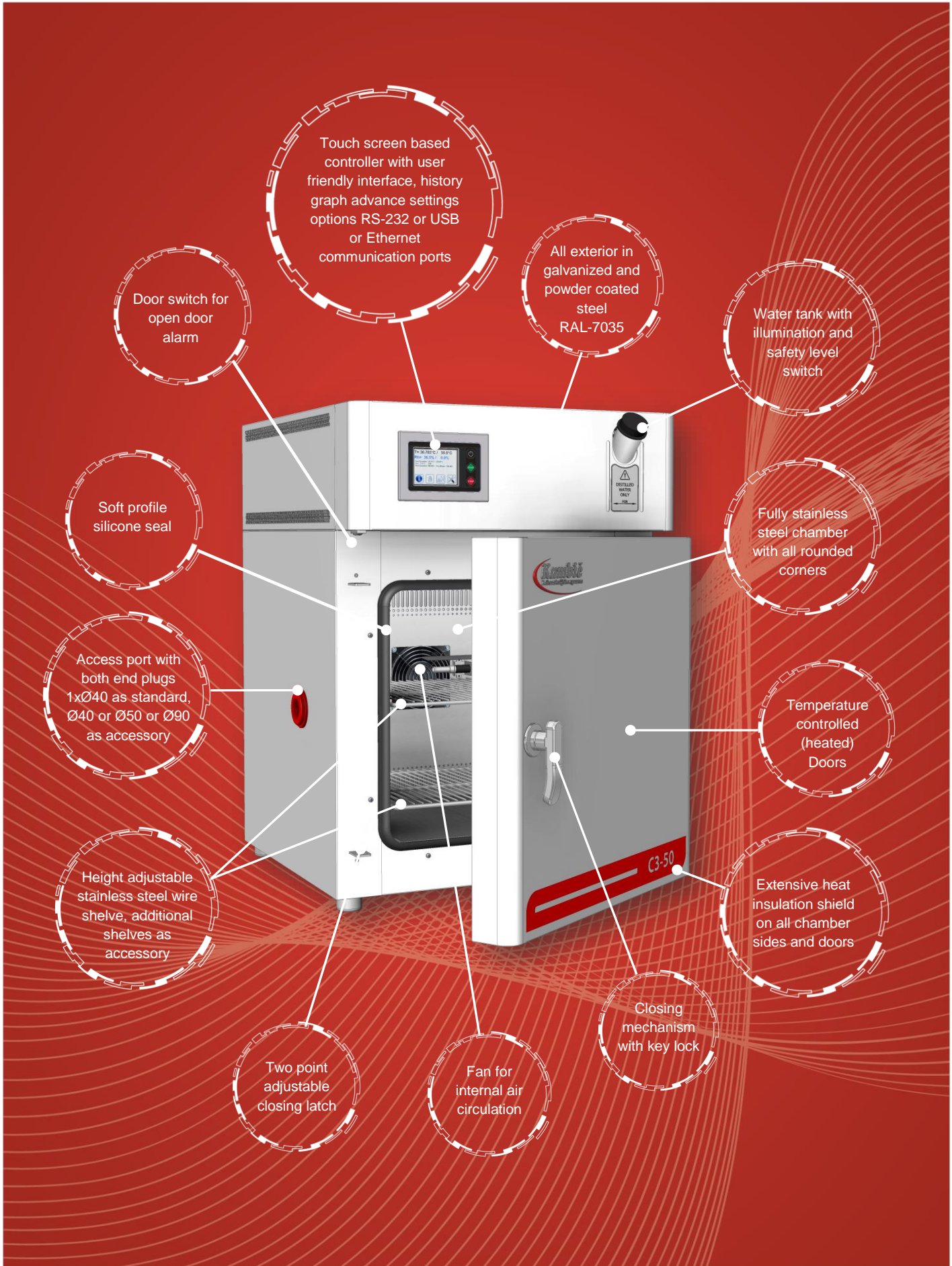
CALIBRATION CLIMATIC CHAMBER

C3-50

Superior temperature and humidity control:

- Perfect for calibration of air temperature and relative humidity sensors
 - Convenient Front Access – Side Access for Cables & Probes
 - Stable, silent, vibration free climatic conditions
 - Superior temperature & Rh uniformity
 - Mixed flow humidity control
 - Cascade PID control





Touch screen based controller with user friendly interface, history graph advance settings options RS-232 or USB or Ethernet communication ports

All exterior in galvanized and powder coated steel RAL-7035

Water tank with illumination and safety level switch

Door switch for open door alarm

Fully stainless steel chamber with all rounded corners

Soft profile silicone seal

Temperature controlled (heated) Doors

Access port with both end plugs 1xØ40 as standard, Ø40 or Ø50 or Ø90 as accessory

Extensive heat insulation shield on all chamber sides and doors

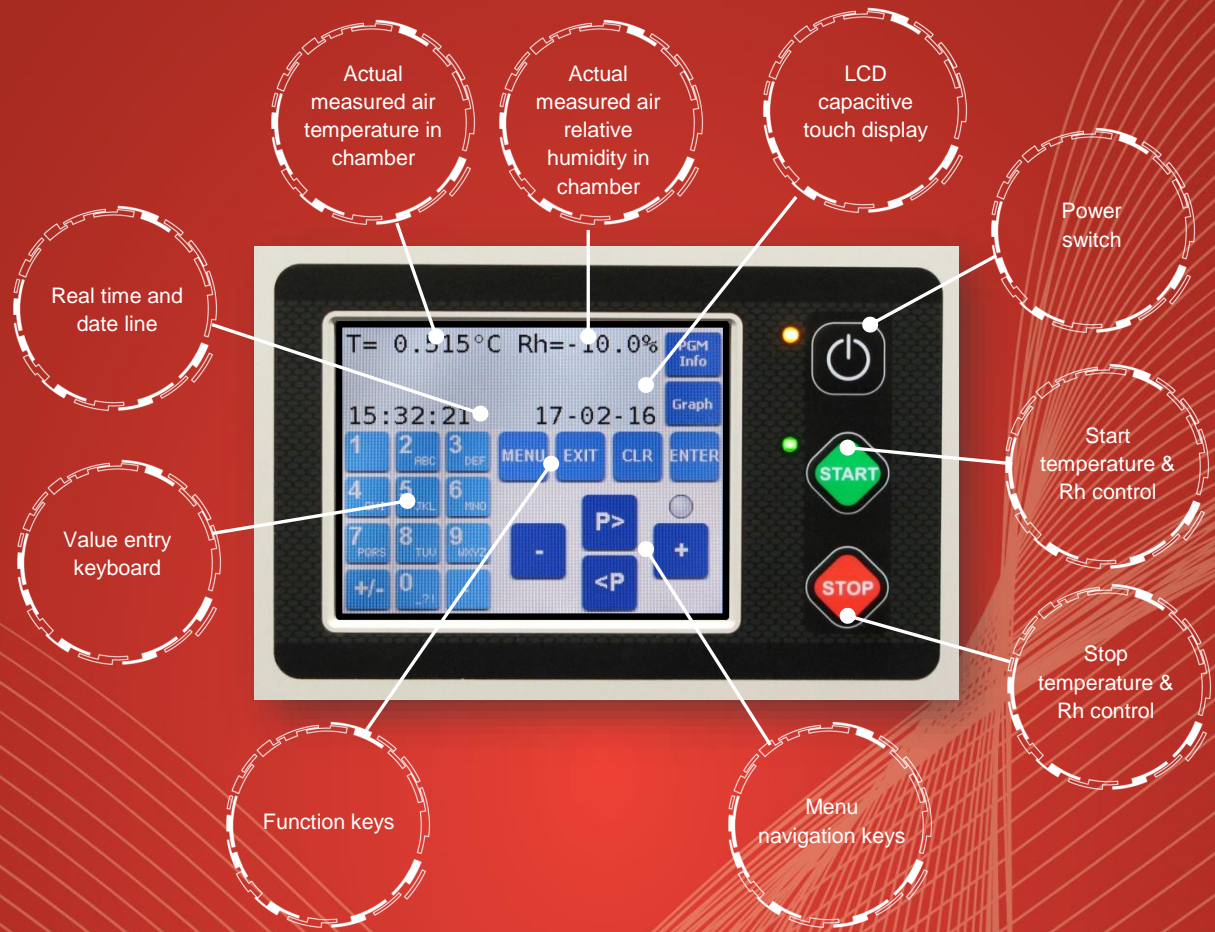
Height adjustable stainless steel wire shelve, additional shelves as accessory

Closing mechanism with key lock

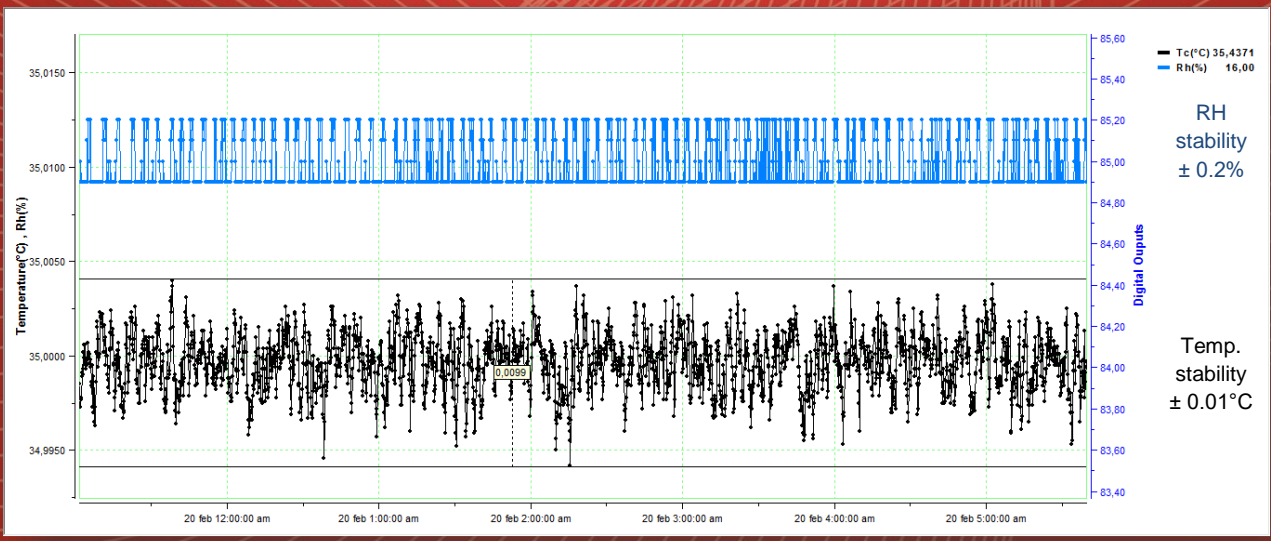
Two point adjustable closing latch

Fan for internal air circulation

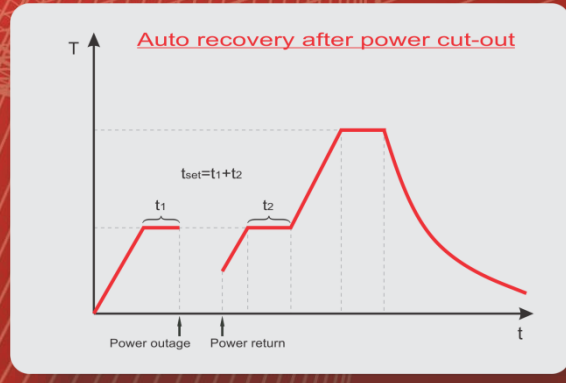
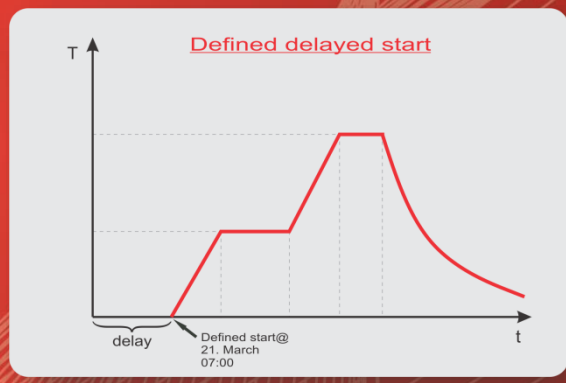
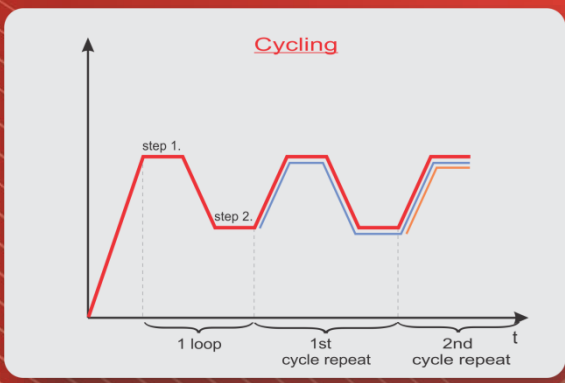
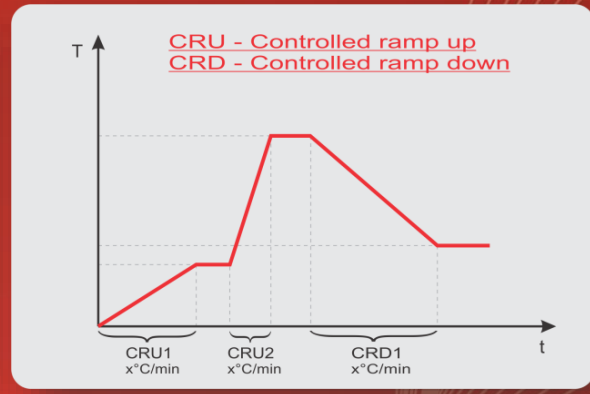
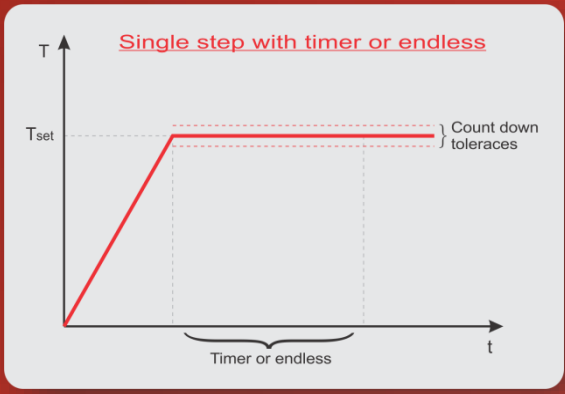
User interface:




Chamber temperature & Rh stability at 35°C and 85% Rh:



Controller functions:



Technical data:

| | C3-50 |
|--|---|
| |  |
| External dimensions (WxHxD) in mm | 570 x 800 x 615 |
| Internal dimensions (WxHxD) in mm | 400 x 400 x 360 |
| Volume (L) | 57 |
| Temperature range (°C) | +10 ... +55 |
| Temperature display resolution (°C) | 0.001 |
| Temperature set resolution (°C) | 0.1 |
| Temperature stability (°C) | STD 0.02 °C (over 30 min) |
| Temperature uniformity (°C) | 0.5 (reference to any point in chamber) |
| Relative humidity range (%) | 5...95 |
| Relative humidity display resolution (%) | 0.1 |
| Relative humidity set resolution (%) | 0.1 |
| Relative humidity stability (%) | ±0.2 @ 21 °C, 50%Rh (better than ±0.8 full range) |
| Relative humidity uniformity (%) | Less than 2% (full range) |
| Temperature control | Cascade PID |
| Relative humidity control | Mixed flow |
| Heating and cooling | Solid state thermoelectric |
| Time to stable set-point | 40 min to any point in range |
| Power supply | 230 V 50/60 Hz |
| Wattage (W) | 800 |
| Interface | RS 232 USB or Ethernet (accessory) |
| Shelve | 1 (max 4) |
| Shelve capacity (kg) | 15 |
| Max capacity (kg) | 30 |
| Access port (mm) | 1 x Ø 40 left wall as standard, Ø 40, Ø 50, Ø 90 (accessory) (different door options) |
| Noise (dBA) @ 1 m distance | <50 |
| Weight (kg) | 79 |

Ordering information and accessories:

| Description | Part no. |
|--|----------|
| Calibration Climatic Chamber C3-50 with trolley | 2664 |
| USB interface | 1466 |
| Ethernet interface | 1716 |
| Shelve C3-50 | 2553 |
| Access Port w. Plug Ø 40 mm right or door (Access port on door excludes door with 2 flanged ports) | 2629 |
| Access Port w. Plug Ø 50 mm right or door (Access port on door excludes door with 2 flanged ports) | 608 |
| Access Port w. Plug Ø 90 mm right or door (Access port on door excludes door with 2 flanged ports) | 1731 |
| C3-50 door with 2 flanged ports | 2665 |
| Multiple layer isolative glass for door flanged port | 2666 |
| Multiple layer isolative block for door flanged port Including capped silicone ports: 2 x Ø 5 mm 2 x Ø 6 mm 2 x Ø 10 mm 2 x Ø 15 mm | 2667 |
| Multiple layer isolative block for door flanged port (for customer individual ports) | 2668 |
| RedEye C3-50 Tool (Software Monitoring & History) | 1663 |
| Evaluation report (by Kambič) | 1719 |
| Air compressor with tank | 2669 |

Different door options:



