

# TRANSITEMPII-RH

## LOW COST TEMPERATURE & HUMIDITY DATA LOGGER



### Features

- Splash resistant (IP64)
- Manual, magnetic or programmable start time
- Instantaneous out of range indication
- User selectable alarm limits
- Optional password protection
- Lanyard attachment
- Low cost
- User friendly
- Fast data offload
- Reusable
- Miniature size
- Approved for Delta® Mainline Flights

### Applications

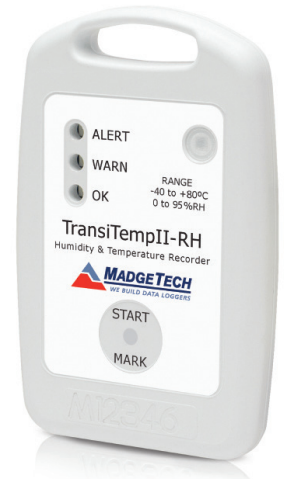
- Implement HACCP programs
- Cold chain monitoring
- Warehouse monitoring
- Verify products are stored and shipped safely
- Monitor refrigerated cars
- Medical and Pharmaceutical
- Laboratory
- Research and Development

The TransiTempII-RH is a stand alone, rugged humidity and temperature recorder. This device is ideal for monitoring and recording the temperature and humidity of products during storage and shipping.

No external probes are required to achieve its high performance as both the temperature and humidity sensors are internal to the device. The TransiTempII-RH has a humidity resolution of 0.1 %RH and typical accuracy of  $\pm 3.5$  %RH at 25 °C. It can record up to 16,383 readings per channel.

The TransiTempII-RH is equipped with three status LED red/green/yellow indicators. It can be programmed through software to start immediately, delayed start for up to 30 days, or be set to start using the magnetic switch.

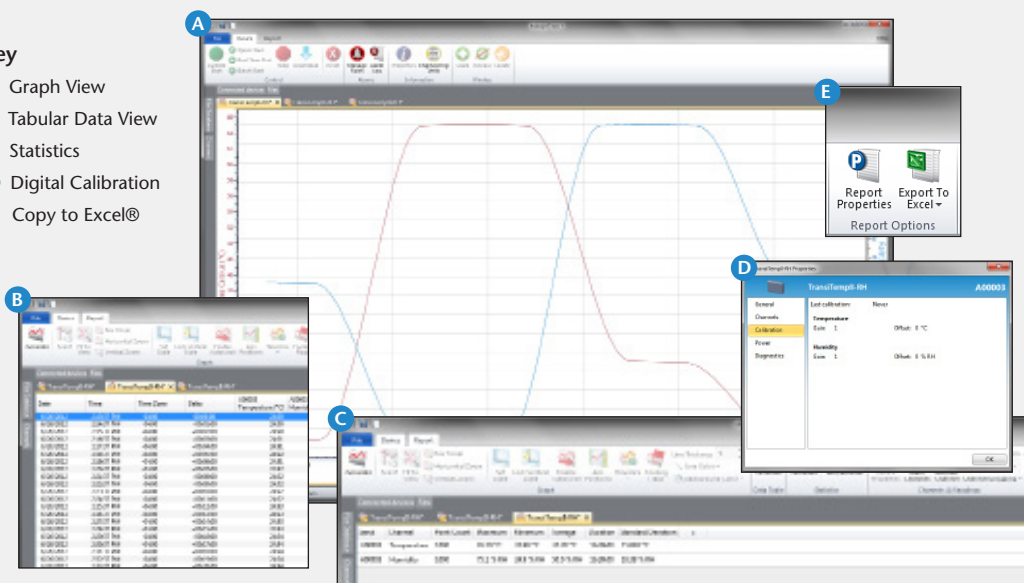
With the MadgeTech user-friendly software, the data can be displayed with a variety of different configurable options. Users have the ability to view temperature data in degrees Celsius, Fahrenheit, Kelvin or Rankine. Humidity readings can be displayed in %RH, water vapor concentration or even dew point. For additional analysis, data can be easily exported to MS Excel® by simply clicking a button.



## MADGETECH DATA LOGGER SOFTWARE

### Key

- A** Graph View
- B** Tabular Data View
- C** Statistics
- D** Digital Calibration
- E** Copy to Excel®



### Software Features:

- Multiple graph overlay
- Statistics
- Digital calibration
- Zoom in/ zoom out
- Lethality equations (F0, PU)
- Mean Kinetic Temperature
- Full time zone support
- Data annotation
- Min./Max./Average lines
- Data table view
- Automatic report generation
- Summary view
- Multilingual

# TRANSITEMPII-RH SPECIFICATIONS\*

\*SPECIFICATIONS ARE SUBJECT TO CHANGE WITHOUT NOTICE. SPECIFIC WARRANTY REMEDY LIMITATIONS APPLY. CALL 1-603-456-2011 OR GO TO WWW.MADGETECH.COM FOR DETAILS.

## TEMPERATURE

<b>Sensor:</b>	Semiconductor
<b>Measurement Range:</b>	-40 °C to +80 °C (-40 °F to +176 °F)
<b>Resolution:</b>	0.1 °C (0.18 °F)
<b>Calibrated Accuracy:</b>	±0.5 °C (±0.9 °F)
<b>Specified Accuracy Range:</b>	-10 °C to +40 °C (14 °F to +104 °F)
<b>Response Time:</b>	90% of change in 30 minutes typical in slow moving air

## HUMIDITY

<b>Sensor:</b>	Capacitive Polymer
<b>Measurement Range:</b>	0 %RH to 100 %RH
<b>Resolution:</b>	0.1 %RH
<b>Calibrated Accuracy:</b>	±5 %RH (±3.5 %RH typical at 25 °C/77 °F)
<b>Specified Accuracy Range:</b>	20 %RH to 80 %RH, +10 °C to +40 °C (14 °F to 104 °F)
<b>Response Time:</b>	90% of change in 2 minutes typical in slow moving air
<b>Calibration:</b>	Digital calibration through software
<b>Calibration Date:</b>	Automatically recorded within device
<b>Memory:</b>	16,383 readings per channel, 32,766 total readings; software configurable memory wrap
<b>Reading Rate:</b>	5 seconds to 30 minutes, selectable in software
<b>Start Modes:</b>	Software programmable immediate start, delay start up to 30 days in advance, or manual start with magnetic switch
<b>Temperature Alarm:</b>	Configurable temperature alarm with programmable high and low alarm limits, high and low warn limits. Each set point may be individually enabled or disabled.

<b>Alarm Delay:</b>	Programmable alarm delay inhibits alarm until alarm limits are exceeded for a total time from the start of recording.
<b>Status Indicators:</b>	
<b>Green:</b>	Blinks to indicate safe conditions during acquisition
<b>Yellow:</b>	Blinks to indicate warn limits have been exceeded
<b>Red:</b>	Blinks to indicate alarm criteria (limits/delay) have been exceeded
<b>Password Protection:</b>	An optional password may be programmed into the device to restrict access to configuration options. Data may be read out without the password.
<b>*Battery Type:</b>	3.6V lithium battery, <b>*Must be sent to MadgeTech for battery replacement.</b>
<b>Battery Life:</b>	1 year typical at 25 °C (77 °F), 1 minute reading intervals
<b>Time Accuracy:</b>	±2 minutes/month at 25 °C (77 °F), ±5 mins./month at -10 °C to +40 °C (14 °F to 104 °F)
<b>Data Format:</b>	Date and time stamped at °C, °F, %RH, mg/ml water vapor concentration
<b>Computer Interface:</b>	USB docking station to PC, 38,400 baud
<b>Software:</b>	XP SP3/Vista/Windows 7/Windows 8
<b>Operating Environment:</b>	-40 °C to +80 °C (-40 °F to 176 °F), 0 %RH to 95 %RH non-condensing
<b>Ingress Protection:</b>	IP64 (splash-resistant)
<b>Weight:</b>	1.4 oz (40 g)
<b>Dimensions:</b>	3.3 in x 2.1 in x 0.4 in (83 mm x 54 mm x 11 mm)
<b>Enclosure:</b>	ABS plastic
<b>Approvals:</b>	Approved for carriage on Delta® mainline flights

**BATTERY WARNING:** FIRE, EXPLOSION, AND SEVERE BURN HAZARD. DO NOT RECHARGE, DISASSEMBLE, HEAT ABOVE 100 °C (212 °F), INCINERATE OR EXPOSE CONTENTS TO WATER.

## ORDERING INFORMATION

MODEL	DESCRIPTION
TRANSITEMPII-RH	Humidity and Temperature Recorder
IFC300	USB Docking Station and Software Manual
Calibration Certificate	Calibration Certificate available for data logger
MadgeTech 4 Secure Software License	License for MadgeTech Secure Software (unlimited users, 1 license per computer, more licenses are available.)

**ASK ABOUT OUR OTHER DATA LOGGERS**

- Temperature
- Humidity
- Pressure
- pH
- Level
- Shock
- LCD Display
- Pulse/Event/State
- Current
- Voltage
- Wireless
- Intrinsically Safe
- Spectral Vibration
- Motion

For Quantity Discounts call 603-456-2011 or email [sales@madgetech.com](mailto:sales@madgetech.com)

